



# **WOLLO UNIVERSITY**



## **Kombolcha Institute of Technology**

### **School of Textile, Leather and Fashion Technology**

#### **Department of Garment Engineering**

##### **Garment Construction –I**

Prepared by:

**Temesgen Asmare**

**2012 E.C**

# Contents

- ▶ Definition of zipper
- ▶ Types of zipper
  - ✓ conventional zipper
  - ✓ separating zipper
  - ✓ Invisible zipper
- ▶ Application of zipper
  - ✓ Centered zipper
  - ✓ Invisible zipper
  - ✓ Fly front zipper
- ▶ Definition of button and button hole
- ▶ Types of button placement

# Zippers

- A zipper is a fastening device made with metal teeth or synthetic coils that make a complete closure by interlocking.
- Several types and lengths of zipper closures exist, The type selected depends on :
  - ✓ the location of the zipper in the garment,
  - ✓ The type of fabric, and
  - ✓ the design of the garment.
- There are three basic types of zippers:
  - ✓ conventional zipper
  - ✓ invisible zipper
  - ✓ separating zipper

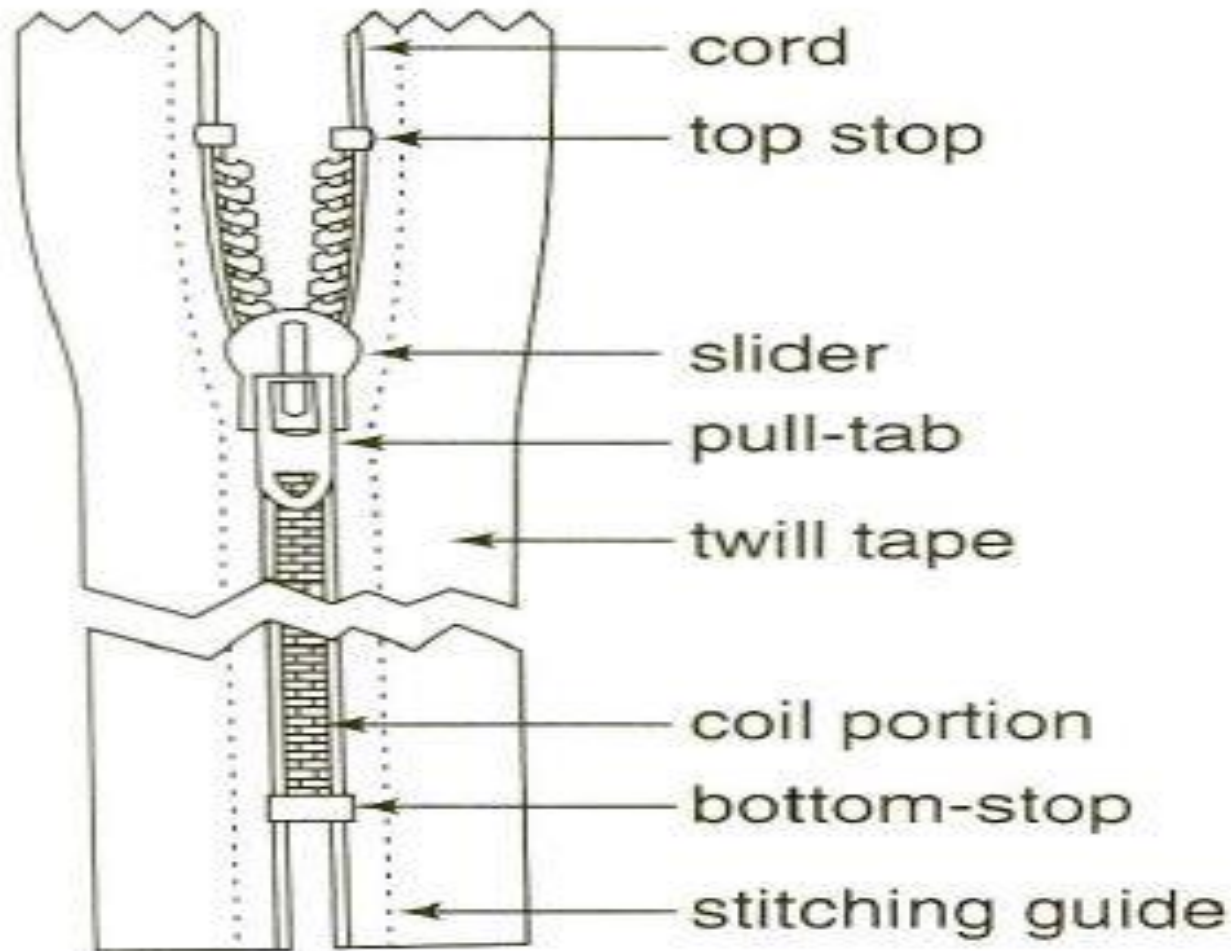
# Cont.

- **conventional zipper** : The conventional zipper opens at the top and has a stop at the bottom. This style is available in a variety of lengths, and is used for garment styles that require a top opening and a bottom closure.

This zipper is used on:

- ✓ Skirt and neckline openings
- ✓ Trousers, slacks, and pants
- ✓ The finished edges of fitted sleeves

## ► conventional zipper



# Cont.

- **Invisible zipper** : The invisible zipper is similar to the conventional zipper, but because of its special coils is concealed in the seam and is applied using a special sewing foot and instructions.
- The invisible zipper is used:
  - ✓ Where any other zipper application would detract from the finished appearance of the garment, such as on matte jersey, velvet, or lace.
  - ✓ To give a smooth, continuous seam line.
  - ✓ On the lower edge openings of fitted sleeves.

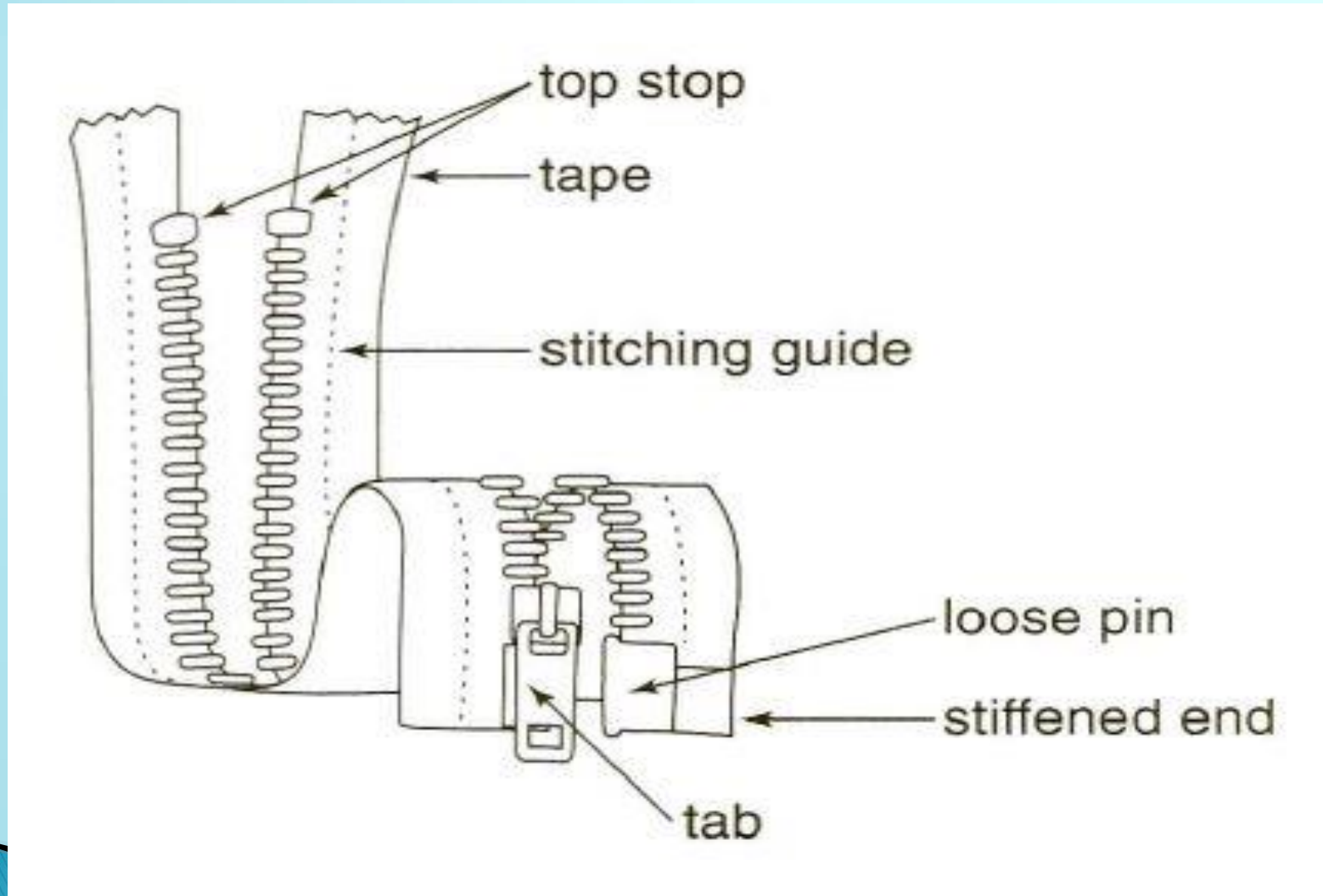
# Cont.

- **separating zipper** : The separating zipper is open at both ends.
- This type is available in lightweight to heavy- weight coils and can be inserted as a decorative
- zipper where tape and teeth will show on the face of the garment or be concealed beneath the seam folds.
- This zipper is available in a variety of lengths.
- The separating zipper is used:
  - ✓ Wherever two sections of a garment separate completely, such as on a jacket, coat, vest, or parka
  - ✓ On detachable hoods
  - ✓ To separate linings from dual-season coats and jackets



# Cont.

## ▶ separating zipper





# Application of zipper

- There are several methods of inserting zippers, depending on the placement of the zipper in the garment, we classify zipper applications as:
  - ✓ Centered zipper
  - ✓ Invisible zipper
  - ✓ Fly-front

## 1) Centered zipper:

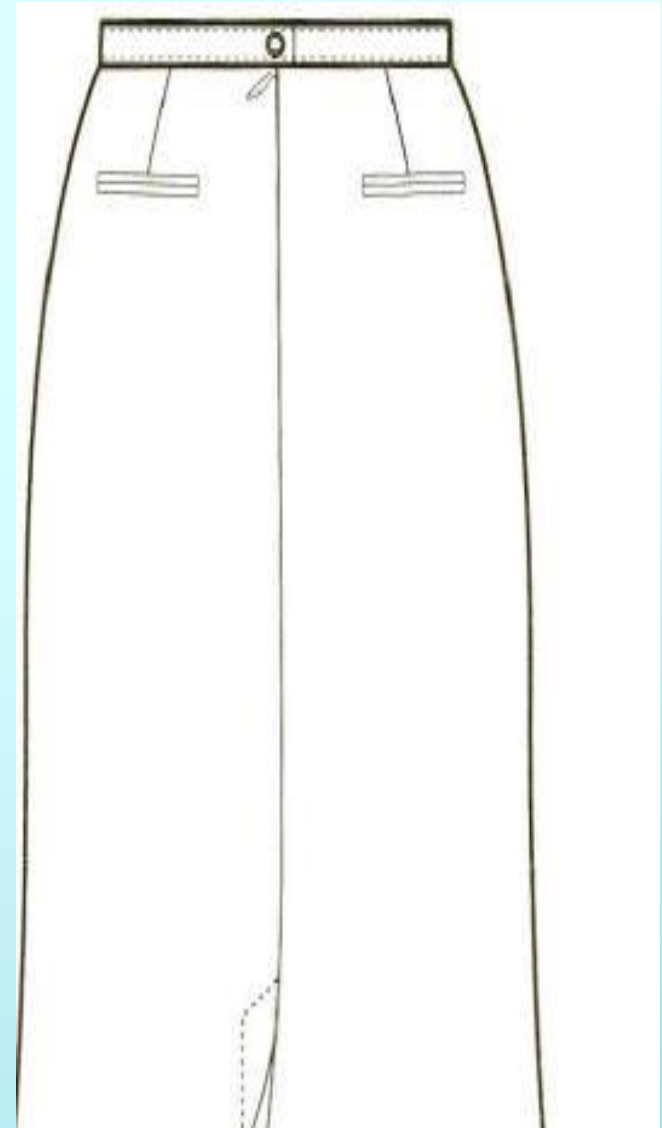
- centered zipper application is the application most commonly used.
- It is used in center-front or center-back seams at a waistline.
- The stitching is visible on both sides of the zipper and is an equal distance from the center.



cont.

## 2) Invisible zipper

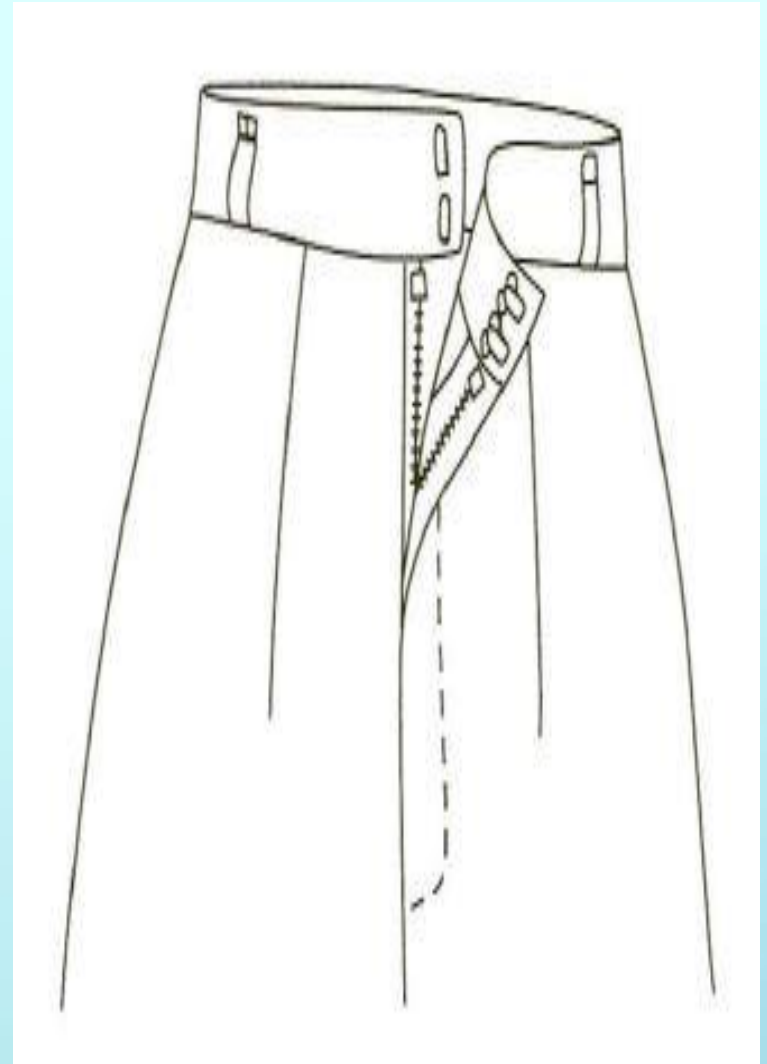
- The invisible zipper is used instead of a conventional zipper if it is desirable to retain the look of a plain seam
- for example, **on an evening gown**, where the zipper stitching would spoil the line of the garment.



# Cont.

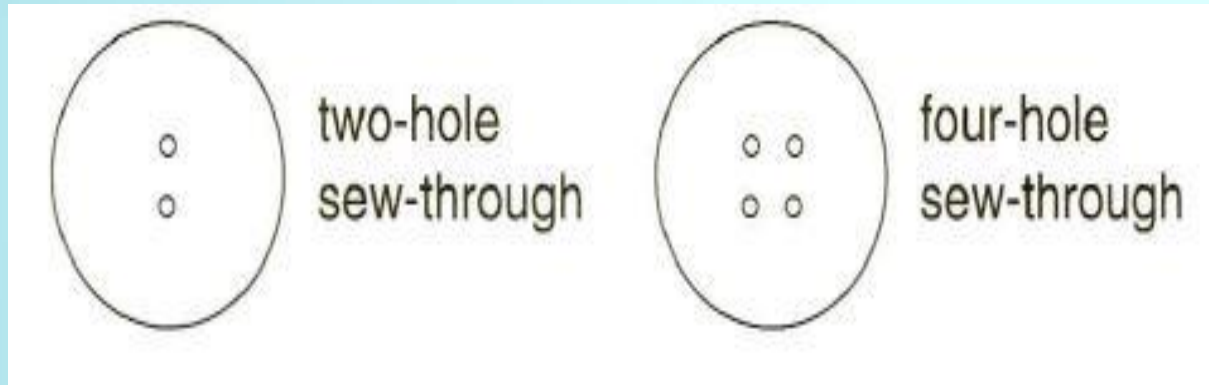
## 3) Fly-front

- The fly-front zipper application uses a more tailored detail and is used in both women's and men's fly-front-opening pants.



# Button and button hole

- The sew-through button has **two** or **four** holes for attaching the button to the garment.

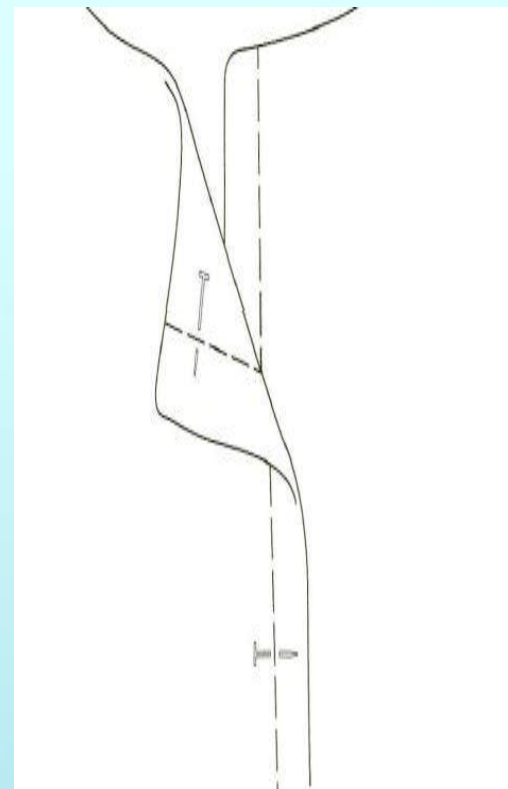


- A buttonhole is a finished opening sized to accommodate a button.
- Buttonholes can be used on any edge that overlaps, such as a **cuff**, **waistband**, or **blouse**.

# Cont.

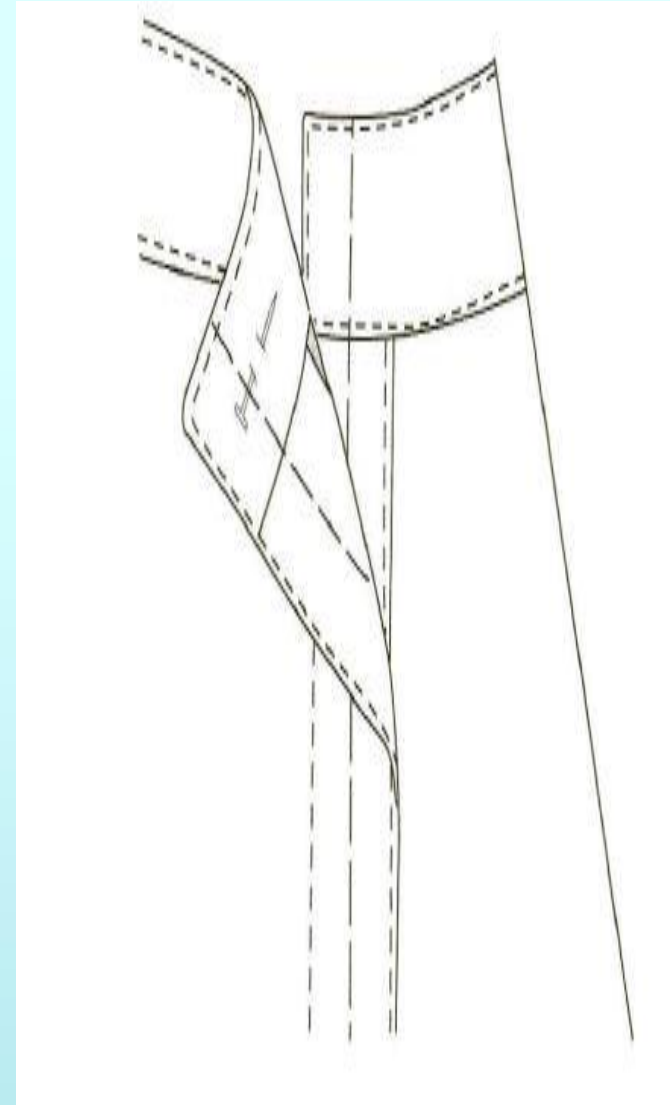
- Buttonholes are placed on the **right hand** side of the garment openings of **women's** or **children's** clothing,
- and on the **left hand** side of **men's** and **boy's** clothing.

**Horizontal buttonholes** are placed  $\frac{1}{8}$ -inch beyond the center line of the garment and extend (the length of the button) into the garment (not into the extension area).



# cont.

- **Vertical buttonholes** are placed on the center line (not the edge) of the garment or placket.
- The vertical spacing is determined by the design of the garment.





THANK YOU