



# **WOLLO UNIVERSITY**



## **Kombolcha Institute of Technology**

### **School of Textile, Leather and Fashion Technology**

#### **Department of Garment Engineering**

##### **Garment Construction –I**

Prepared by:

**Temesgen Asmare**

**2012 E.C**

# Contents

- Definition of collar

- Types of collar

  - ✓ Stand collar

  - ✓ Flat collar

  - ✓ Roll collar

- Definition of pocket

- Types of pocket

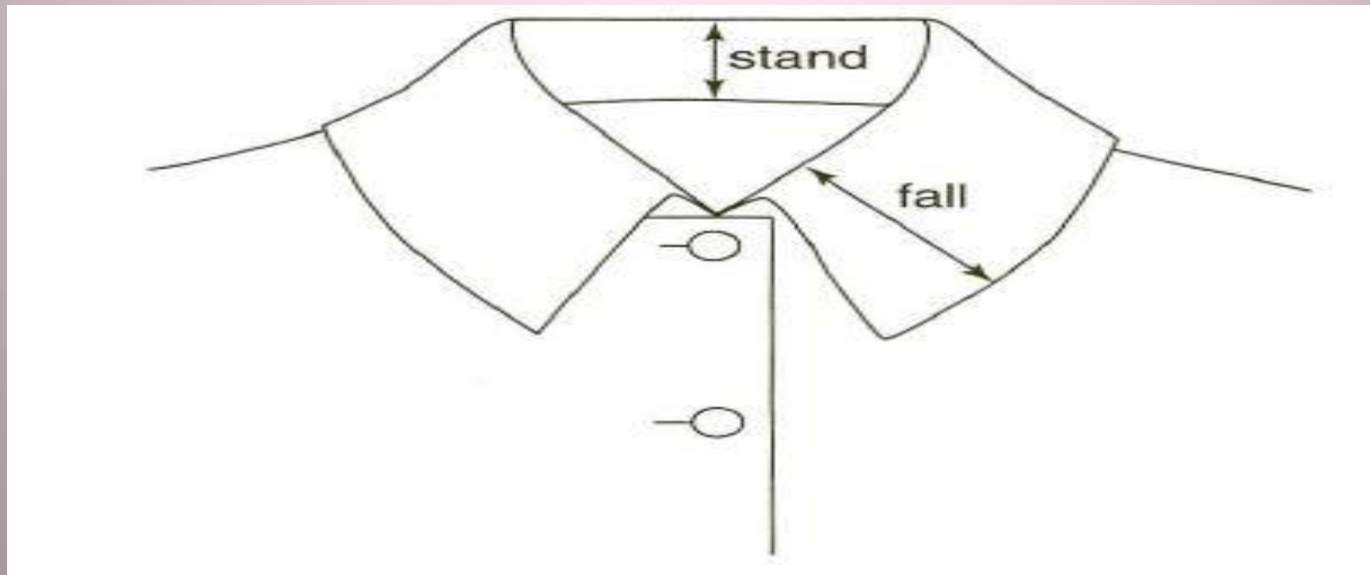
  - ✓ Patch pocket

  - ✓ Welt pocket

# COLLAR

- A **collar** is a separate piece of fabric attached to the neckline of a **shirt**, **blouse**, or **dress**.
- Collars can be made of **matching** or **contrasting** fabric and they can be trimmed in lace or embroidery.
- A **stand** is the height and portion of the collar that rises above the neckline to which it is attached. The stand extends from the neckline to the roll line.

- The roll line is the line at which the collar is turned back onto itself at the top of the stand.
- The positioning of this line determines the height of the stand, and thus the fall of the collar.



# TYPES OF COLLAR

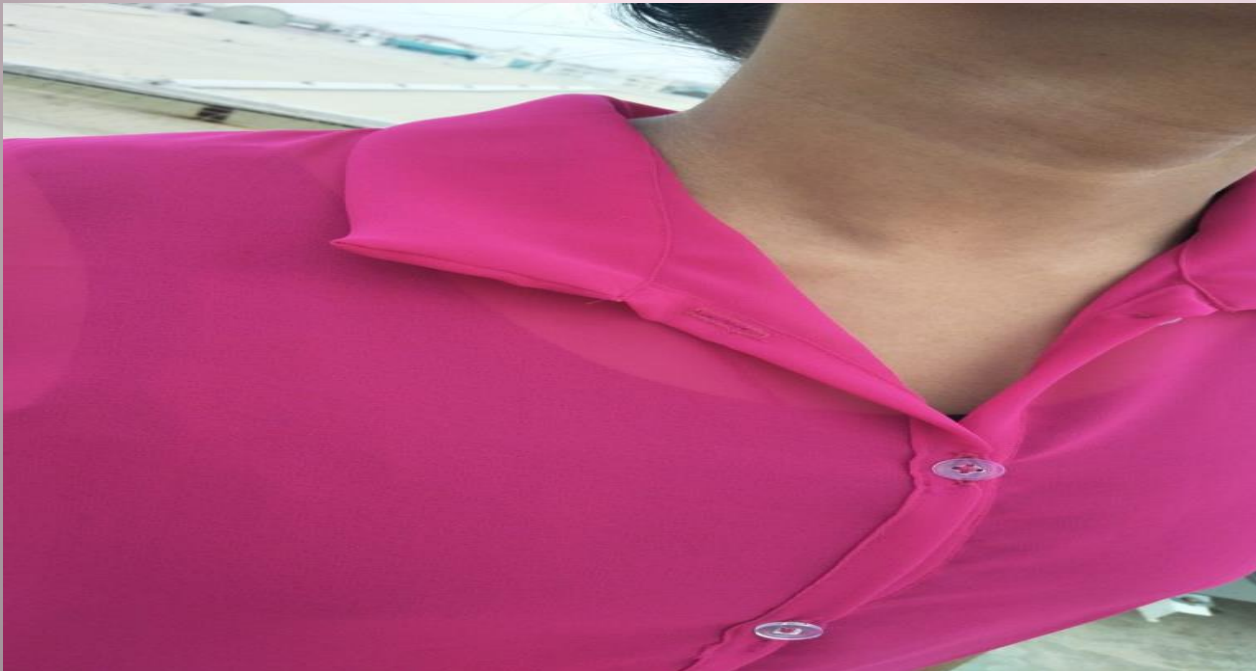
- The classification of collars is majorly based on the utilization of the collar stand.
- Basically, there are 3 collars types based on the position and size of the band.
- The 3 types of collars are:
  - 1) the stand collar,
  - 2) flat collar, and
  - 3) the roll collar.

## CONT.

- The **stand** or **mandarin collar** is narrow and stands up from the neckline.
- It can be cut as a straight strip (usually on the bias) or with a slight curve.
- This type of collar is used on blouses, men's shirts, and dresses.



- **Flat Collars:** These collars fall flat on the dress around the neckline and are plain in their look.
- There will be no collar stand, hence they fall on to the shoulders.





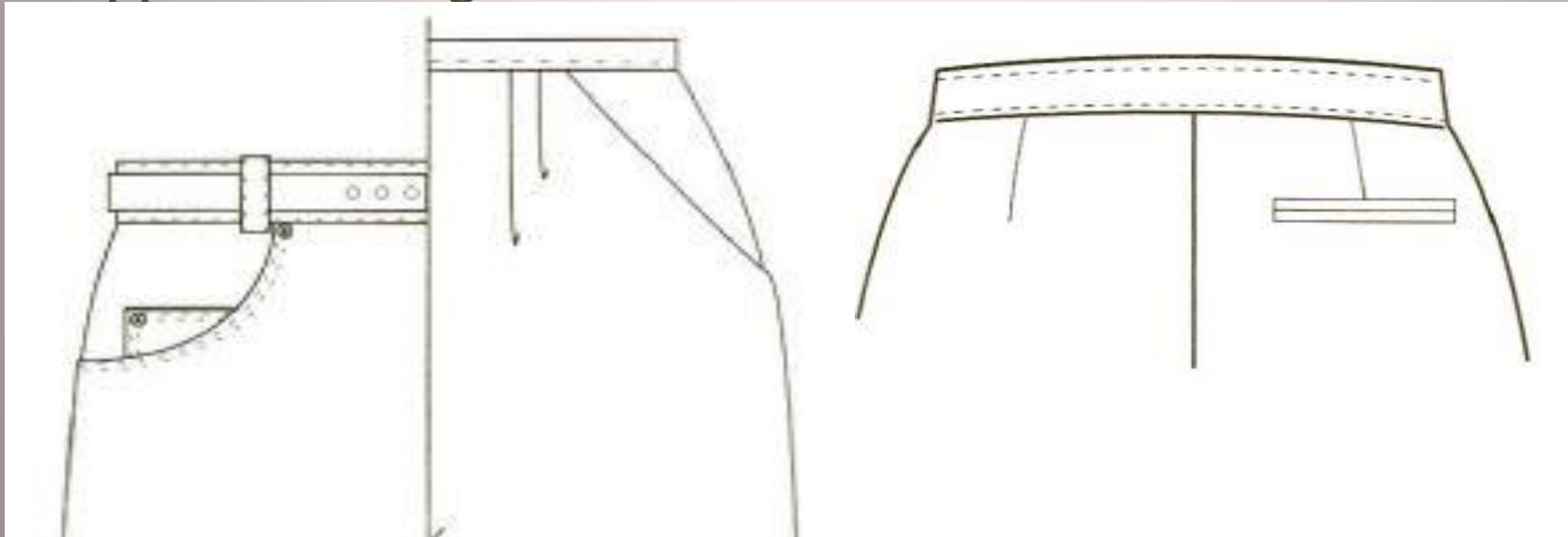
- The **roll or shirt collar** usually has a stand around the neck that is placed between the collar and the shirt.
- This stand raises the collar so that its finished edge falls smoothly back over the neck edge.





# POCKET

- A **pocket** is a shaped piece of fabric set either on the outside of a garment or into a garment seam or opening.
- Pocket can be used as a decorative or or functional purpose.
- When we apply pocket for functional purpose it will have some jobs to do like to carry small articles, such as handkerchiefs or coins.
- But when we apply for decorative purpose it only add aesthetic appeal for the garment.



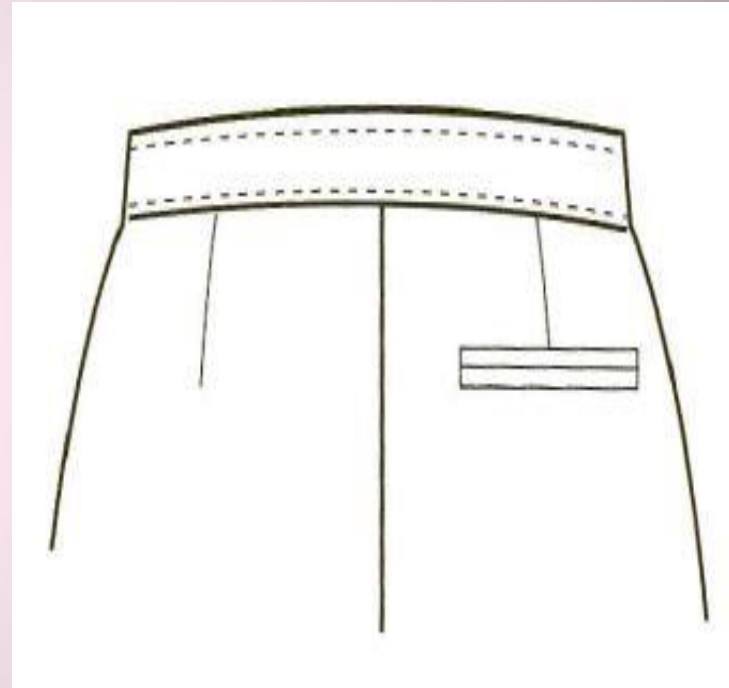
# TYPES OF POCKET

- **Patch pockets:** Patch pockets are both decorative and functional and are most often part of the design for shirts, blouses, dresses, and jackets.
- They are made from a single layer of fabric that is hemmed and sewn to the outside of the garment with a finish suitable to the fabric.
- Patch pockets can be square, rectangular, pointed, or curved and can be decorated with braid or other trims.



# CONT.

- A **welt bound pocket** is a set-in pocket that is sewn into a special slashed opening, finished by an upstanding welt that may be from  $\frac{1}{2}$ -inch wide to 1-inch wide.
- Frequently used in designer coats and suit jackets as well as in pants, blouses.
- For different styling features, the fabric used for the welt may be different from the fabric used for the garment.



THANK YOU